

**nunc**



CELLA

Leather

NEW

# Near Here Bag

- Water repellent leather -

no. NN454010

A convenient 2-way shoulder bag, L Drawstring pouch, two small sizes with the ability to add attachments.

The body material is made of waterproof leather with 3M waterproofing agent "SCOTCHGARD".



Storage space is divided into a drawstring main body and open pocket section.



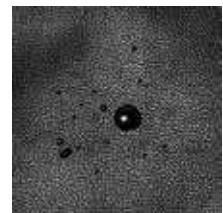
The tape end has an attached key ring detail. Features magnet that can be removed with one touch allowing the user to easily extend and retract the tape for convenience when using the key ring.



Pouch comes in two sets, large and small.



Easily replaceable drawstring pouch.



highly waterproof cow leather on main body.

W : 130 H : 210 D : 55 / W : 130 H : 125 D : 45

Material Water repellent leather / 3 Layer Nylon

Color ■ BLACK

Weight 0.22g

Volume L : 1.4L S : 0.7L

NEW

# Vertical Flap Shoulder Bag

- Water repellent leather -

no. NN455010

A smart and light spirited shoulder flap with lustrous double link and a metallic button accent in the centre of the button.

Thin gauze makes this a comfortable choice for using externally or internally to your clothing and also with a backpack. The body material is made of waterproof leather with 3M waterproofing agent "SCOTCHGARD".



Fastener pocket on the back side with YKK Excella.



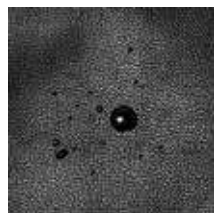
Open pocket on the front of the main unit.



Designed so that the user can hang small articles on the drawcord attached to the interior of the bag.



Comes with attached keyring that can be added to cord on the interior of bag or front D ring.



highly waterproof cow leather on main body.



Cord length is easily adjustable with resin parts.

W : 220 H : 285 D : 10

Material Water repellent leather

Color ■ BLACK

Weight 290g

Volume 1L

※サンプルからサイズの修正が入る可能性があります。担当者までお問い合わせください

# Supermarket - Water repellent leather -

no. NN450010

A one-handle tote bag based around the design of a shopping bag. Roughly half the size of a backpack, with a silhouette that fits on your shoulder. Shoulder strap is also included.

The body material is made of waterproof leather with 3M waterproofing agent "SCOTCHGARD". Space for storing small items on the back and interior of the main unit, and the side features tape so for attaching accessories and other items.



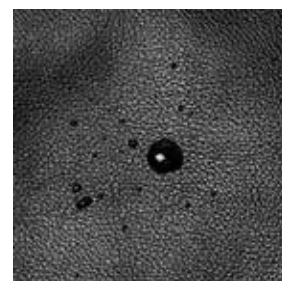
Open pocket in the interior.



Hidden pocket on the back of the main section.



Designed with inward recess to fit the shoulders.



highly waterproof cow leather on main body.

W : 310 H : 320 D : 140

Material	Water repellent leather
Color	■ BLACK
Weight	770g
Volume	11L

# Pouch - Water repellent leather -

no. NN452010

Pocket-sized shoulder pack that is small enough to store small items such as wallets and smartphones.  
Thin gusset makes for it is convenient to use the outer inner layer or use it together with the backpack. Body made of waterproof leather with 3M waterproofing agent "SCOTCHGARD".



Interior drawcord for accessories attached to interior.



Highly waterproof cow leather on main body.



Features key link attachment on the front  
Open pocket on the back.



Hidden pocket on the  
back of the main section.



Easily adjustable cord with resin parts.

W : 140 H : 190 D : 5

Material Water repellent leather  
Color ■ BLACK  
Weight 140g  
Volume 0.1L

# Current

- Water repellent leather -

no. NN453010

A pocket-sized shoulder pack that is small enough to store small items such as wallets and smartphones. Features YKK Excella fasteners. Thin gusset makes for it is convenient to use the outer inner layer or use it together with the backpack.

Body made of waterproof leather with 3M waterproofing agent "SCOTCHGARD".



Features key link attachment on the front  
Drawcord attached to interior.



Hidden pocket on the  
back of the main section.



Highly waterproof cow leather  
on main body.



Easily adjustable cord with  
resin parts.

W : 160 H : 230 D : 5

Material Water repellent leather

Color ■ BLACK

Weight 180g

Volume 0.18L



CELLA

NEW

# Vertical Flap Shoulder Bag

no. NN405010 ( BLACK )

no. NN405075 ( NAVY )

A smart and light spirited shoulder flap with lustrous double link and a metallic button accent in the centre of the button.

Thin gauze makes this a comfortable choice for using externally or internally to your clothing and also with a backpack.

Water repellent, lightweight 3 layer nylon with superior waterproofness.



The mouth of the main storage opens and closes with button fastener.



Open pocket on the front of the main unit.



Comes with attached keyring that can be added to cord on the interior of bag or front D ring.



Designed so that the user can hang small articles on the drawcord attached to the interior of the bag.



Cord length is easily adjustable with resin parts.



The main body fabric adopts a 3 layer nylon which has moisture permeation and waterproofness.

W : 220 H : 285 D : 20

Material

3 Layered Nylon

Color

■ BLACK ■ NAVY

Weight

10g

Volume

1L

# Near Here Bag

no. NN101010 ( BLACK )  
no. NN101075 ( NAVY )



A convenient 2-way shoulder bag, L Drawstring pouch, two small sizes with the ability to add attachments. The main material is a three-layered nylon with a sense of elasticity and a fine mesh material with stretched effect.



POUCH S

Storage can be divided into the drawstring part of the body and the mesh section on the front.



The tape end has an attached key ring detail. Features magnet that can be removed with one touch allowing the user to easily extend and retract the tape for convenience when using the key ring.



Easily replaceable drawstring pouch.

W : 130 H : 210 D : 55 / W : 130 H : 125 D : 45

Material 3 Layer Nylon / Stretch Mesh  
Color ■ BLACK ■ NAVY  
Weight 110g  
Volume L : 1.4L S : 0.7L

# Supermarket

no. NN106010 ( BLACK )  
no. NN106075 ( NAVY )



Lightweight tote bag created with the aim of designing a useful shopping bag. Easy to fit on the shoulder by using the attached user-friendly shoulder strap. Water repellent, lightweight 3 layer nylon with superior waterproofness.



Designed to be moulded inwards to make it easier to fit on the shoulder.



Side loop designed to attached key rings etc.



Interior features a small pocket designed for storing smartphones etc.



Hidden rear pocket.



The main body fabric adopts a 3 layer nylon which has moisture permeation and waterproofness.

W : 310 H : 320 D : 140

Material 3 Layerd Nylon  
Color ■ BLACK ■ NAVY  
Weight 260g (including strap)  
Volume 11L

### 3 Layered Nylon Sacoche

no. NN104010 ( BLACK )  
no. NN104075 ( NAVY )

As opposed to a hook type opening, this sacoche has a fastener opening for easy access. Thin gauze makes this a comfortable choice for using externally or internally to your clothing and also with a backpack. Water repellent, lightweight 3 layer nylon with superior waterproofness.



Comes with attached keyring that can be added to cord on the interior of bag or front D ring.

The main body fabric adopts a 3 layer nylon which has moisture permeation and waterproofness.

W : 270    H : 240    D : 25  
Material    3 Layerd Nylon  
Color        ■ BLACK   ■ NAVY  
Weight       110g (including keeling)  
Volume       1.6L



Designed so that the user can hang small articles on the drawcord attached to the interior of the bag.

Cord length is easily adjustable with resin parts.

### 3 Layered Nylon Pouch

no. NN105010 ( BLACK )  
no. NN105075 ( NAVY )

Pouch shoulder bag easily suitable for small items such as wallets, smart phones etc. Thin gauze makes this a comfortable choice for using externally or internally to your clothing and also with a backpack. Water repellent, lightweight 3 layer nylon with superior waterproofness.



Comes with attached keyring that can be added to cord on the interior of bag or front D ring.

The main body fabric adopts a 3 layer nylon which has moisture permeation and waterproofness.

W : 140    H : 190    D : 5  
Material    3 Layerd Nylon  
Color        ■ BLACK   ■ BEIGE  
Weight       70g (including keeling)  
Volume       0.1L



Designed so that the user can hang small articles on the drawcord attached to the interior of the bag.

Cord length is easily adjustable with resin parts.

WALLET - 01

# Single

Compact wallet with L-shape zipper made from an oil shrunk cow leather.  
※Khaki color is made Italian smooth leather.

no. NN201010 (BLACK)

no. NN201065 (KHAKI)



Exterior features storage for cards and bills.  
Other side features space for storing receipts and other similar items.



Features double ring on rear side.



Features YKK' s Excella fastener.

W : 102      H : 95      D :

Material      COW LEATHER  
Color      ■ BLACK      ■ KHAKI  
Weight      -g  
Volume      -L

# Double

A three-fold compact wallet made from oil-shrunk cow leather.

※Khaki color is made Italian smooth leather.

no. NN202010 (BLACK)

no. NN202065 (KHAKI)



Interior is engraved with brand logo.



Two card storage spaces on bill storage side.



Double ring on rear side.



Easy access coin storage space with flap.

W : 75      H : 95      D :

Material

COW LEATHER

Color

■ BLACK   ■ KHAKI

Weight

-g

Volume

-L

# Rooster

A three-fold compact wallet made from oil-shrunk cow leather.

※Khaki color is made Italian smooth leather.

no. NN203010 (BLACK)

no. NN203065 (KHAKI)



Double ring on rear side.



Interior is engraved with brand logo.



Features YKK' s Excella fastener.

W : 98      H : 85      D : 25

Material	COW LEATHER	
Color	■ BLACK	■ KHAKI
Weight	-g	
Volume	-L	



DELTA

# Traveler's Backpack

no. NN001010



W : 335 H : 530 D : 170  
 Material Hollow Fiber Nylon 840d  
 Color  BLACK  
 Weight 1640g  
 Volume 30L

A large-capacity backpack suitable for a 2/3 day trip.  
 Light weight despite its size, due to a 840d nylon construction which is approximately 20% lighter than materials of comparable specs.



Shoulder-strap attached 3 way backpack.



The main storage area is designed to enhance privacy.



Possibility to fix the fastener pull.



A variety of well-considered storage spaces and pockets with fasteners suitable for storage of laptops, documents and more.



High visibility reflective material details for optimum use at nighttime.

# Rectangle Backpack

no. NN002010



W : 310 H : 440 D : 165  
 Material Hollow Fiber Nylon 840d  
 Color  BLACK  
 Weight 1150g  
 Volume 22.5L

Backpack with superior functionality and simple design.  
 Light weight despite its size, due to a 840d nylon construction which is approximately 20% lighter than materials of comparable specs.



A variety of well-considered storage spaces and pockets with fasteners suitable for storage of laptops, documents, bottle holders and more.



Harness designed to fit the body.  
 Removable chest belt.



High visibility reflective material details for optimum use at nighttime.



Main storage area includes a private storage space.

# Daily Backpack

no. NN003010

Backpack perfectly suited for daily use. Finished with a curve silhouette.  
Light weight despite its size, due to a 840d nylon construction which is approximately 20% lighter than materials of comparable specs.



A variety of well-considered storage spaces and pockets with fasteners suitable for storage of laptops, documents, bottle holders and more.

W : 320 H : 500 D : 170  
Material Hollow Fiber Nylon 840d  
Color ■ BLACK  
Weight 1010g  
Volume 24.5L



Main storage area includes a private storage space



Possibility to fix the fastener pull.



High visibility reflective material details for optimum use at nighttime.

# Musette shoulder

no. NN005010

Shoulder bag designed for carrying small items  
Light weight despite its size, due to a 840d nylon construction which is approximately 20% lighter than materials of comparable specs.



W : 285 H : 215 D : 10

Material Hollow Fiber Nylon 840d  
Color  BLACK  
Weight 190g  
Volume 0.6L



Simple style.



Carabiner fitted to shoulder strap for hooking key holders etc.



High visibility reflective material details for optimum use at nighttime.

# Document case

no. NN006010

Stylish A4 document case with magnet hook flap.  
Light weight despite its size, due to a 840d nylon construction which is approximately 20% lighter than materials of comparable specs.



W : 235 H : 325 D : 20

Material Hollow Fiber Nylon 840d  
Color  BLACK  
Weight 270g  
Volume -L



Two mesh pockets and A4 document space in the interior.



The flap has a fastener pocket that is convenient for storing accessories such as pens.



High visibility reflective material details for optimum use at nighttime.



Features interior card holder.

# Pouch L

no. NN007010

A convenient pouch for small items.

Light weight despite its size, due to a 840d nylon construction which is approximately 20% lighter than materials of comparable specs.



W : 280	H : 220	D : 10
Material	Hollow Fiber Nylon 840d	
Color	■ BLACK	
Weight	80g	
Volume	0.6L	

# Pouch S

no. NN008010

A convenient pouch for small items.

Light weight despite its size, due to a 840d nylon construction which is approximately 20% lighter than materials of comparable specs.



W : 185	H : 140	D : 10
Material	Hollow Fiber Nylon 840d	
Color	■ BLACK	
Weight	50g	
Volume	0.25L	

# Expand 3way

no. NN009010

Business-ready, highly functional 3-way bag.

Light weight despite its size, due to a 840d nylon construction which is approximately 20% lighter than materials of comparable specs.



Various sizes of storage space including document space, PC storage, privacy space and pen-holder.



3 way hand-held / shoulder / backpack specification. The backpack harness can be stored and hidden inside a compartment on the back.



Opening can be adjusted by opening and closing the fastener.



Features carry bar detail.

W : 420 H : 280 D : 105 (170)

Material Hollow Fiber Nylon 840d

Color  BLACK

Weight 1150g

Volume 12.5L (20.0L)

# Holiday Backpack

no. NN011010



W : 350 H : 430 D : 150  
 Material Hollow Fiber Nylon 840d  
 Color  BLACK  
 Weight 840g  
 Volume 20L

A seemingly simple day pack type bag full of excellent functionality such as side pockets, interior privacy space, PC storage and so on. Light weight despite its size, due to a 840d nylon construction which is approximately 20% lighter than materials of comparable specs.



Reflective materials allow for high-visibility at night.  
 Safety zipper pull with velcro fastener, useful for the prevention of theft.



Main storage area includes a private storage space.



Expandable side pocket with fastener.



Convenient hook style open pocket for small items on the front side of the interior.

# Useful Tote Bag

no. NN012010



W : 360 H : 330 D : 150  
 Material Hollow Fiber Nylon 840d  
 Color  BLACK  
 Weight 720g  
 Volume 17L

Multifunctional 2way tote bag with carry strap which can also accommodate PC storage. Perfect for business and more. Light weight despite its size, due to a 840d nylon construction which is approximately 20% lighter than materials of comparable specs.



Main storage is opened and closed with zipper and additionally with hook attachment at the front.



Features carry bar detail.



Possibility to fix the fastener pull.



Main storage area includes a private storage space.





ELEVEN

# Crony Waist Bag

no. NN014010

Waist bag with black graduation and different design materials.

The main storage area features a zipper pocket on the front. The rear storage area has a clear pocket for small items and can be opened and closed by removing the buckle from the top.

Constructed from a lightweight hollow 840d nylon which is 20% lighter than conventional nylon.



The interior has an open pocket that can be opened and closed with Velcro.



Features carabiner which can be released on the exterior side due to the nature of the fasteners.



Back side pocket can be opened and closed by removing the buckle on the top of the body. Interior features clear film pockets and open pockets.

W : 270 H : 160 D : 40

Material	Hollow Fiber Nylon 840d
Color	■ BLACK
Weight	290g
Volume	1L



**MSPC** CO.,LTD.

**HEAD OFFICE**

〒541-0051 大阪市中央区備後町 3-2-13 2F  
TEL +81(0)6 6265 2677  
FAX +81(0)6 6265 2633  
k.furuya@nunc-s.com

2F 3-2-13 BINGOMACHI CHUO-KU  
OSAKA , JAPAN  
541-0051

**PRESS ROOM**

〒150-0001 渋谷区神宮前 4-22-3 パレスジン B1F  
TEL +81(0)3 3796 1296  
FAX +81(0)3 3796 1299  
k.furuya@nunc-s.com

PALACE GIN B1F 4-22-3 JINGUMAE  
SHIBUYA-KU TOKYO , JAPAN  
150-0001